



**WEST HOVE  
INFANT SCHOOL**  
.....  
**A family of friends**



# Hove Learning Federation School/Portland Road Newsletter



Friday 29 September 2023

Dear Families,

The first 4 weeks of term have flown by! Our reception children are now in school full- time, and we all warmly welcome them and their families into our school community. We have had a wonderful start back at school this year, and have been so proud to see the children really settled and focused on their learning.

Our reception classes have already started their whole class phonics lessons, and we have been so impressed by the children's writing across the whole school. If your child is in Y2 - Y6 please ask them how their 'spelling shed' lessons have been going. Our pupil voice this week in spelling was exceptional and we were blown away with how much the children had taken on this additional spelling resource in class.

We are all looking forward to seeing what achievements this year brings for both individual children and for the whole school. Thank you to you all for sending your children into school in their correct uniforms, which really does promote a sense of belonging across the schools. We have a wide range of preloved uniform available, so please do get in touch if you would like some.

We wish you all a lovely sunny weekend!

Please continue to keep in contact with us – should you have any questions or concerns, contact us via the following:

West Hove Infant School  
[admin@westhove-inf.brighton-hove.sch.uk](mailto:admin@westhove-inf.brighton-hove.sch.uk)  
01273 733386



Hove Junior School  
[portlandroadenquiries@hovejun.brighton-hove.sch.uk](mailto:portlandroadenquiries@hovejun.brighton-hove.sch.uk)  
01273 916609

Hove Junior School Inclusion Team  
[inclusionteam@hovejun.brighton-hove.sch.uk](mailto:inclusionteam@hovejun.brighton-hove.sch.uk)  
01273 916609

Best wishes,  
Maddie Southern and Ben Massey

## Diary Dates

**4th October** - Maths parent workshops – calculation strategies 9am and 3.30pm

**5th October** - National Poetry Day - Poet Roger Stevens Visit to School Road

**20th October** - Last Day of School

**23rd - 27th October** - Half Term

**30th October** - INSET Day

**31st October** - First day back for pupils

**7th & 9th November** - Parent/Carer Consultation Evenings

**20th November** - Year 6 Parent/Carer Workshops

**8th December** - Flu Vaccinations at SR and PR



# Year 3 Stunning Start!

Year 3 kick-started their 'Portals Through the Ages' topic with a Stone Age to Iron Age day! They had great fun and learnt heaps: that Neanderthals needed twice the amount of calories that Homo sapiens did and that was part of the reason why they died out; how early humans worked together to hunt woolly mammoths; how people in the Stone Age would light fires by striking flint stones together; how life changed in the Bronze and Iron Ages; and much, much more! They even got to handle some artefacts, including the splinter of a real-life woolly mammoth tooth! The children looked excellent in their dressing up outfits and took part in all the activities enthusiastically. Thank you to parents and carers for your efforts in supporting the children with this exciting day.





# Year 3 Stunning Start!



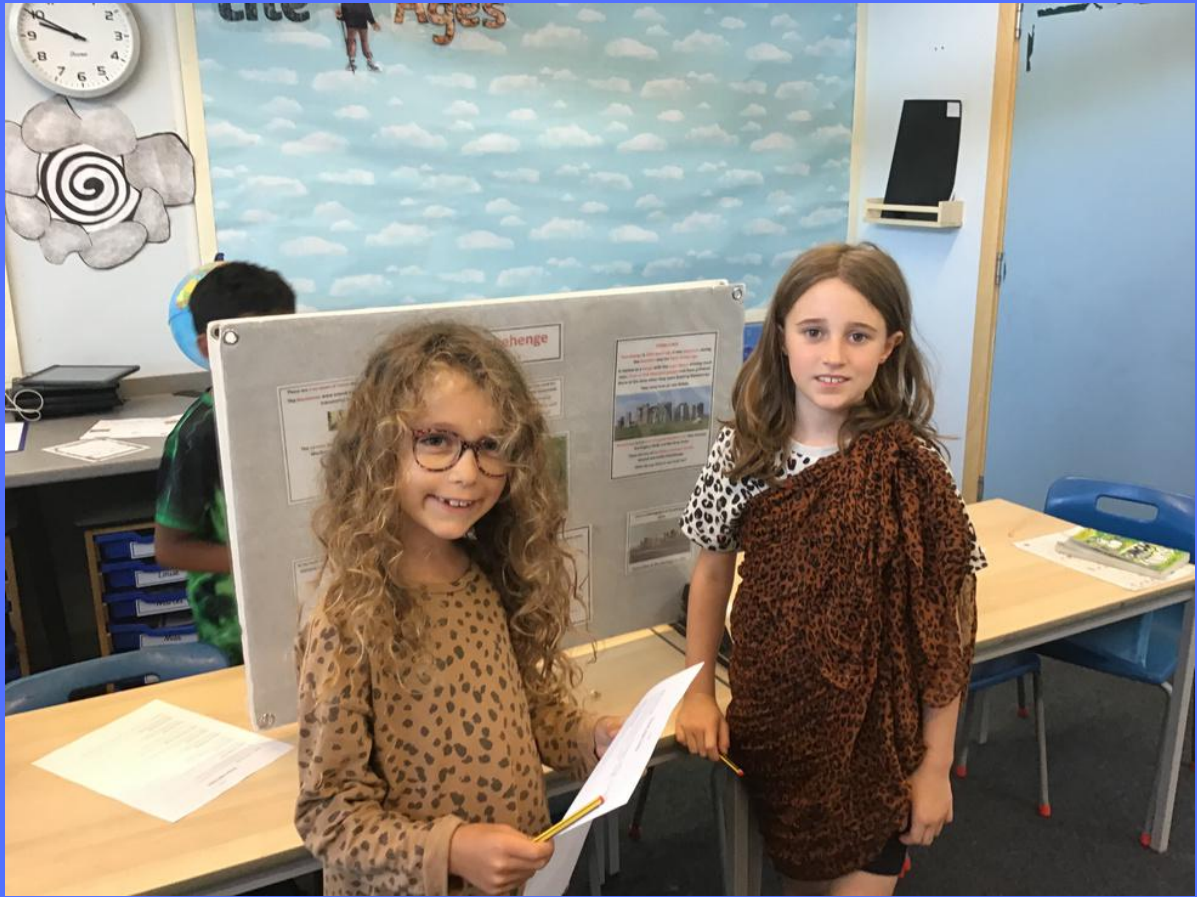


# Year 3 Stunning Start!





# Year 3 Stunning Start!





**At Hove Learning Federation  
we celebrate languages  
from all communities.**

**Tuesday 26th September  
was The European Day of  
Languages. Over the next  
couple of weeks, children will have the opportunity to share  
and celebrate, languages within their own classes.**



The European Day of Languages (EDL) is celebrated across Europe on the 26th of September every year. It aims to promote the rich linguistic diversity of Europe and raise awareness of the importance of lifelong language learning for everyone. It was set up by the Council of Europe and was first celebrated in 2001.





## **Introducing Connective Family: Helping to connect**

Connective Family helps families to create calm through connection and presence so that children – our next generation – can grow to meet their full potential and live their best lives.

Connective Parenting NVR is a therapeutic parenting approach. It takes a relationship-based approach to creating connection and challenging difficult behaviours.

Through our reactions and interactions as adults, we can change our family or school dynamic and support our children to learn and grow. Our approach is founded on the principles of NVR and practised with an understanding of trauma and attachment.

Helping to create strong, happy connective family relationships by supporting and training parents and professionals.

[www.connectivefamily.com](http://www.connectivefamily.com)

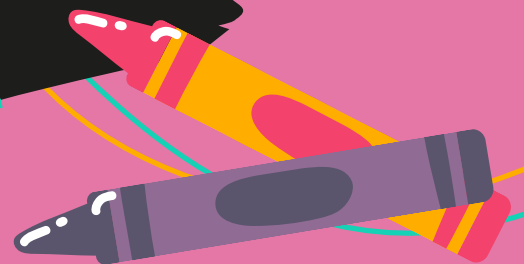
01323 923954





# CALENDAR COMPETITION

## FIND YOUR VOICE



Each year, Impact Safety Net creates a calendar which is sent out to all school pupils as well as community groups across Brighton & Hove. The calendar is made up of pictures drawn by children.

This year we would like children to create a picture around the theme 'Find Your Voice'.



**DEADLINE:**  
**14TH NOV 2023**

## HOW TO ENTER

Include child's name, age and which school they go to

Email it as a high res PDF to [ruth.davey@impact-initiatives.org.uk](mailto:ruth.davey@impact-initiatives.org.uk)

Or send in the post to the address: Impact Safety Net, Manor  
Offices, C/O Emmaus, Drove Road, Brighton BN41 2PA





# Are you concerned about your child's mental health?



- Anxiety
- Low mood
- Difficulties regulating emotions
- Self esteem and confidence
- Sleep difficulties
- Fears and phobias
- Separation, loss and bereavement



Scan the QR code below to *refer* your concern to Hove Learning Federation's Mental Health Lead. Link also available on our school website.

<https://www.westhoveinfants.co.uk/wp-content/uploads/sites/10/2023/03/Capture-1.png>



Naomi Miller (Mental Health Lead) will contact you within a week of your referral.

New referrals will be discussed at half termly triage meetings and support allocated.

NB: If you have an urgent concern about a child's mental health please call 0300 304 0061 during office hours or 0300 5000 101 outside of office hours.





## Midday Supervisor required

Hove Junior School & West Hove Infant School - **Holland Road site**

Monday to Friday 12.00 – 1.00 pm (5 days per week)

Paid weeks per year 43.78

Hourly rate £11.81

We are looking for an MDSA to work with our friendly and supportive team of lunchtime staff and play leaders. You will need to:

- Supervise our children during lunchtimes, both in the playground and in the canteen
- Have a firm and fair approach with children from Reception to Year 6
- Have good inter-personal skills and a calm manner
- Be either first-aid trained or willing to undertake similar training

Closing date 8th September 2023

Interview date 15th September 2023

Start date: TBC

To apply for this job, please complete an application form and return to the school office or email it to:

[pambarry@hovejun.brighton-hove.sch.uk](mailto:pambarry@hovejun.brighton-hove.sch.uk)

Employment under the Federated Board includes all locations/sites where both schools operate. Under this contract, you may be asked to work across different locations under the Federated Board, either temporarily or permanently

We are proud that our school is a culturally rich and diverse place of learning, and we are keen to encourage people from diverse ethnic backgrounds to apply and join our staff team. The school has a strong focus on Equality, Diversity & Inclusion for our pupils, staff and governors and we are passionate about creating an environment where every pupil can thrive. We are also very proud that Hove Junior School is an Inclusion Quality Mark (IQM) Centre of Excellence.

Hove Junior School and West Hove Infant School are committed to safeguarding and promoting the welfare of children and young people and expects all staff and volunteers to share this commitment. All new staff will be DBS (Disclosure Barring Service) checked at an advanced level.



## Midday Supervisors required

Hove Junior School – based at **Portland Road site**

Monday to Friday 12.20 – 1.20 pm (5 days per week)

Paid weeks per year 43.78

Hourly rate £11.81

We are looking for MDSAs to work with our friendly and supportive team of lunchtime staff and play leaders. You will need to:

- ☐ Supervise our children during lunchtimes, both in the playground and in the canteen
- ☐ Have a firm and fair approach with children from Year 3 to Year 6
- ☐ Have good inter-personal skills and a calm manner
- ☐ Be either first-aid trained or willing to undertake similar training

Hove Learning Federation is committed to safeguarding and promoting the welfare of children and young people and expects all staff and volunteers to share this commitment.

Closing date 19th July 2023

Interview date TBC

Start date 4th September 2023

To apply for this job, contact Kate Newman, Office Manager

Email: [katenewman@hovejun.brighton-hove.sch.uk](mailto:katenewman@hovejun.brighton-hove.sch.uk)



**ROOM TO NURTURE  
ROOM TO LEARN  
ROOM TO GROW**



**Tutor  
Room** Ltd

ROOM TO NURTURE • ROOM TO LEARN • ROOM TO GROW

Does your child have a love of learning?  
Are they achieving to the best of their ability?  
Do they believe in themselves and feel confident?

**TUTOR ROOM IS A TEAM OF VERY EXPERIENCED, QUALIFIED TEACHERS WITH A SHARED PASSION FOR LEARNING. WE ARE PROVIDING HIGH QUALITY TUITION THROUGHOUT BRIGHTON AND HOVE AND WILL ENSURE YOUR CHILD ACHIEVES THEIR FULL POTENTIAL, BOTH ACADEMICALLY AND PERSONALLY.**

- ✓ Primary (age 5-11) and Secondary (age 11-18) trained teachers
- ✓ Fully-DBS checked and referenced
- ✓ 1:1 tuition available in your home or on-line in all subjects, including SATs and GCSE revision
- ✓ In-depth assessment and identification of your child's needs
- ✓ Expertise in teaching children of all abilities and individual needs, including any SEND requirements
- ✓ Pairings or small groups available on request



**Message from Rachel Dodson - Founder and Director of Tutor Room Ltd**

*I have worked in education for the last twenty years in Brighton and Hove and I am also a local parent. I will use my expertise to help you map out your child's educational journey, supporting and advising you throughout the process for the long term. Please contact me to discuss your child's needs. I look forward to speaking with you. - Rachel*

**Contact Rachel**



07746 250 837



tutorroomltd@gmail.com



<https://tutorroomltd.co.uk/>



Logo Sports Schoolwear are offering a 10% discount throughout the October half term.

Discount Code - HALFTERM10

This offer is only available online and only valid between 23rd October - 29th October.

<https://www.logo-schoolwear.co.uk/>



## Cost of Living

For useful information on the Cost of Living crisis, please click on this link:

<https://www.which.co.uk/topic/cost-of-living>

## GDPR Reminder

Please be advised that you can find out Privacy Notice on our website, click here to access the document

<https://www.westhoveinfants.co.uk/wp-content/uploads/sites/10/2018/06/DPE-Model-Data-Privacy-Notice-Jan-2023.pdf>

**Brand Vaughan**  
are proud to be  
partnered with  
**West Hove Infant  
School and Hove  
Junior School.**

brand  
vaughan

Sell or let your property with Brand Vaughan and receive  
**20% off** our standard selling or lettings fee.

Each time you sell or let your property through Brand Vaughan, West Hove Junior School will receive **10%** of the referred selling or letting fee.

Our partnership with West Hove Junior school, not only benefits you, but also benefits your children's school.

**Speak to our team today, we offer free, no obligation valuations.**

Use code **WESTHOVEBV20** to claim your  
**20% discount.**



**Sales**  
**Jimmy Atkins**  
01273 22 11 02



**Lettings**  
**Jenna Miles**  
01273 22 11 01