



**WEST HOVE  
INFANT SCHOOL**  
.....  
**A family of friends**

# Hove Learning Federation School/Portland Road Newsletter

Friday 19<sup>th</sup> September 2025

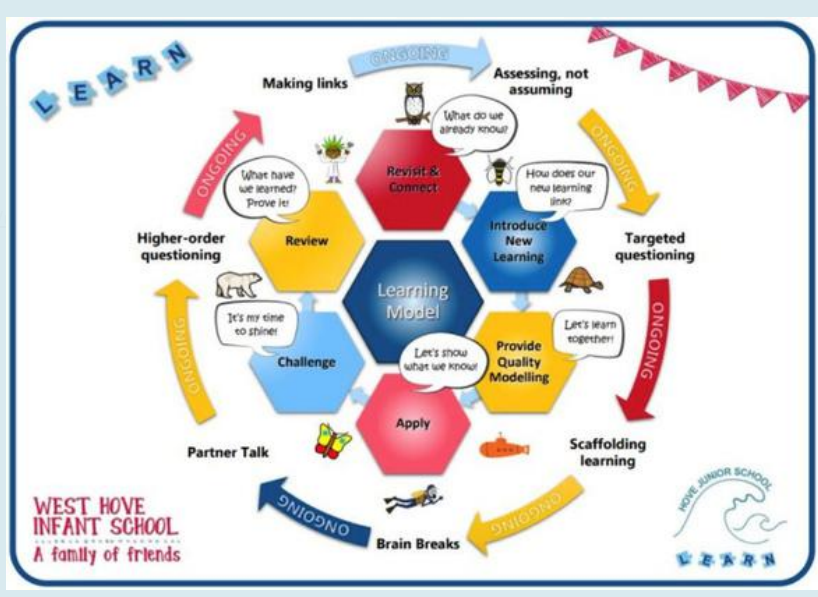
Dear Families,

We are delighted to welcome you back to school and it has been great to see so many families at our meet the teacher events across all 3 sites. We are looking forward to supporting your child's learning and our vision for the federation continues to be that:

**We provide high-quality education to all pupils. This is realised through strong, shared values, policies, and exceptional, inclusive practice.**

**We are a Family of Friends who LEARN together.**

All of our lessons follow a predictable **lesson structure** which builds confidence and lowers cognitive load. Lessons follow a clear **sequence** mapped out in the subject progression documents using our lesson model below:



1. Revisit prior learning from previous lessons and linked unites from past terms and years
2. Make links with this learnt knowledge and new learning
3. Access new learning through skilled teacher modelling
4. Apply new understanding and skills with partner and independent work
5. Experience challenge at their level
6. Review the learning for that day and be guided to see how their understanding has deepened

### Being Ready to Learn

The staff have been impressed by the children's positive behaviour and team work settling back into the autumn term. We have been busy working on setting up clear routines and high expectations both in class and around the school including setting up our Class Charters in Year 1 to 6. The use of a Charter helps to bring the children into the heart of discussion and to help them develop into self-controlled, mindful and respectful learners.

Positive behaviour can be taught and shaped like any new skill and is based on building a culture of trusting positive relationships within the classroom in order to promote a **'Ready to Learn'** ethos. Our class **learning compass** guides the children towards making more positive choices and relationships. The aim is to create a culture of mutual respect and trust using the Learning Compass to ensure our children are aware of appropriate behaviours, while developing a high self-regard and esteem. Frequent positive and meaningful praise for good and caring behaviours as an effective way of improving standards and relationships between pupils. **Please see our learning compass below and ask your child to explain it to you. Over the next two newsletters we will go into more detail about how we use these systems and ways to help regulation.**



Please continue to keep in contact with us – should you have any questions or concerns, contact us via the following:

West Hove Infant School  
[admin@westhove-inf.brighton-hove.sch.uk](mailto:admin@westhove-inf.brighton-hove.sch.uk)  
 01273 916707

Hove Junior School  
[hollandroadenquiries@hovejun.brighton-hove.sch.uk](mailto:hollandroadenquiries@hovejun.brighton-hove.sch.uk)  
 01273 916707

Hove Junior School Inclusion Team  
[inclusionteam@hovejun.brighton-hove.sch.uk](mailto:inclusionteam@hovejun.brighton-hove.sch.uk)  
 01273 916609

Best wishes,  
 Maddie Southern

### Diary Dates

- 22<sup>nd</sup> Sept** - Y1 Maths Workshop
- 23<sup>rd</sup> Sept** - Y2 Maths Workshop
- 24<sup>th</sup> Sept** - Individual Photos - SR
- 25<sup>th</sup> Sept** - Individual Photos - PR
- 26<sup>th</sup> Sept** - FOWHIS Play in the Playground - Reception parents/carers
- 1<sup>st</sup> Oct** - Y5 Beach Trip
- 8<sup>th</sup> Oct** - FOWHIS Annual General Meeting (via Zoom)
- 21<sup>st</sup> Oct** - End of term Spooky Bakes



# YEAR 3 'PORTALS TO THE PAST' WORKSHOP

Last Friday, 12 September, our Year 3 class enjoyed an exciting and educational session with Portals to the Past. The children learned fascinating facts about history and had the chance to handle some very interesting artefacts. It was a day filled with curiosity and discovery, sparking a real love of learning about the past.



# YEAR 3 'PORTALS TO THE PAST' WORKSHOP



## Punctuality and Attendance expectations at Hove Learning Federation

### Punctuality

Our aim is for children to be in school every day, on time. We work closely with families to support this to happen.

The school day starts promptly at 8:50 am at Holland Road and Portland Road, and lessons start at 9.00 am at School Road. If children do arrive late, they find it very hard to catch up on the work they have missed. If children arrive after the register has been taken, they will be marked as L (late). Any child who arrives at school from 9:30am at SR, 9.20am at PR & HR site onwards will be marked as U (unauthorised late). This will count as an unauthorised absence. Any children arriving late should enter the school via the front office with their parent/carer to register their arrival.

### Sickness

If your child is too unwell to attend school, please contact the school office on the number/s below, on the first day of absence by 10am and then each school day thereafter. Children with low-level illness can still attend school. The traffic light guidance below may help you decide if your child is well enough to come into school. Please also see NHS guidance here: <https://www.nhs.uk/live-well/is-my-child-too-ill-for-school/>

If your child has a medical condition that could impact school attendance, please let us know. There may be support that we can offer.

<p><b>RED – STAY AT HOME</b></p> <p><b>Sickness &amp; Diarrhoea</b></p> <p>48 hours must have elapsed before a child can return to school from the last episode.</p>	<p><b>AMBER – COME TO SCHOOL AND COMMUNICATE WITH STAFF</b></p> <p><b>Headache, Feeling Sick, Stomach Ache</b></p> <p>Children often feel unwell if they are anxious, if in doubt contact the school for advice.</p>	<p><b>GREEN – COME TO SCHOOL</b></p> <p><b>Mild cough, Cold, Sore Throat, Feeling Tired</b></p> <p>We will always contact you if your child is ill during the school day</p>
--	--	--

**School Road Site:** 01273 733386 or [admin@westhove-inf.brighton-hove.sch.uk](mailto:admin@westhove-inf.brighton-hove.sch.uk)

**Portland Road:** 01273 916609 Option 1 or [portlandroadenquiries@hovejun.brighton-hove.sch.uk](mailto:portlandroadenquiries@hovejun.brighton-hove.sch.uk)

**Holland Road:** 01273 916707 or [hollandroadenquiries@hovejun.brighton-hove.sch.uk](mailto:hollandroadenquiries@hovejun.brighton-hove.sch.uk)

### **Absence during Term Time**

In line with the DFE statutory guidance, Hove Learning Federation can only authorise absence during term time in very exceptional circumstances. Holidays during term time can not be authorised and may lead to a Fixed Penalty Notice issued by the Local Authority.

For further information please refer to Hove Learning Federation's **Attendance Policy**.



September 2025

Dear Families

We are writing to inform you about the BounceTogether survey that we use throughout our school community.

Hove Learning Federation is committed to creating a comprehensive and supportive learning environment for all children. Therefore we believe it is crucial to understand the wellbeing of our children. While we routinely measure academic outcomes we believe that measuring wellbeing to identify where children may need additional support to enhance their learning experience is also invaluable.

The BounceTogether survey has been developed as an essential tool to measure mental health and wellbeing, we are increasingly aware of the need to place mental health and wellbeing at the core of everything we do and it's the importance of supporting this for everyone within our community. With regards to individual information gathered from the surveys, this is treated confidentially within schools.

Our aim is to directly influence changes within our school, linking them closely to the needs within our setting, BounceTogether will only serve to reinforce the value we place upon mental health and wellbeing as we strive to support all individuals in this area of school life.

If you have any questions about BounceTogether please do not hesitate to contact the school.

Yours sincerely,

Maddie Southern  
Executive Headteacher



# COMMUNITY BASKETBALL INITIATIVE 2025-26

## BRIGHTON & HOVE PRIMARY SCHOOLS

### PRIMARY SCHOOLS OFFER

- FREE** • **FREE BASKETBALL FESTIVAL**  
Aiming to introduce basketball to students and promote our local exit routes.
- **BEFORE AND AFTER SCHOOL CLUBS**  
With free tasters to identify and promote interest and a targeted after school clubs
- **SPECIALIST BASKETBALL FOCUS**  
DBS checked, 10M insured qualified, professional coaches with local exit routes.

**INFO@COMMUNITYBASKETBALL.ORG**  
**ELEVATE YOUR SCHOOL, ELEVATE YOUR COMMUNITY**

# PRESTON PARK YOUTH DUATHLON

Sat 04<sup>th</sup> October | 10:00 AM



Fun and friendly duathlon for ages 8–16

No experience needed

Finishers medals and podium prizes

Full info at [ppycc.org.uk/duathlon](http://ppycc.org.uk/duathlon)



**Yellowwave**  
*Hove*

**25% OFF**  
**BEACH SOCCER PITCH HIRE**  
**FOR LOCAL U16'S TEAMS**

**USUAL COST £60/HR REDUCED TO**  
**£45/HR (BRING UP TO 18 KIDS)**

---

**FOR BOOKINGS UNTIL**  
**END OF OCT**

**WWW.YELLOWWAVE.CO.UK**  
**T: 01273 000270**

# Yellowwave Hove

## NEW BEACH SOCCER SESSIONS



**Tues: 5-6pm, 7-11yrs (Mixed)**  
**6-7pm, 12-16yrs (Mixed)**  
**Thurs: 5-6pm, 7-11yrs (GIRLS ONLY)**

**Book online, £7.50/hr**  
**[www.yellowwave.co.uk](http://www.yellowwave.co.uk) T: 01273 000270**

# HELP US RAISE MORE MONEY WITH MATCH FUNDING!



## What is Match Funding?



It is a fantastic way to **double** the money we raise at school events — at no extra cost to you!

Many employers offer to match the funds raised by employees for charities like us. If you volunteer at a PTA event or help raise funds, your company might match the amount we raise — £100 becomes £200!

## Which employers offer Match Funding?

Here are just a few well-known companies that participate:



If you're not sure, ask your HR dept – they'll tell you if you're eligible

## How can you help?



1. Volunteer at one of our events (even just an hour!)
2. Check if your employer offers Match Funding
3. Apply through your workplace — it's usually a simple form

## Why it matters



With Match Funding, we can support school with more resources for our children — without asking families to donate more.

Questions? Email us at [fowhis@gmail.com](mailto:fowhis@gmail.com)

# Raise funds for us for FREE

with  easyfundraising



Join as our supporter today at:

[www.easyfundraising.org.uk/support-a-good-cause](http://www.easyfundraising.org.uk/support-a-good-cause)

Just search for:

Fowhis (Friends of West Hove Infants School)

8,000+ retailers will donate to us whenever you shop with them



JOHN  
LEWIS



Start at the  
easyfundraising  
website or app

Click out  
to where you'd  
like to shop



Checkout:  
prices are exactly  
the same!

The retailer sends  
a % of your spend  
to easyfundraising



They pass  
it on to us  
:)

Plus, you'll get...



Exclusive retailer offers



Competitions



A warm feeling inside!

Over  
**£60m**  
raised for UK good causes

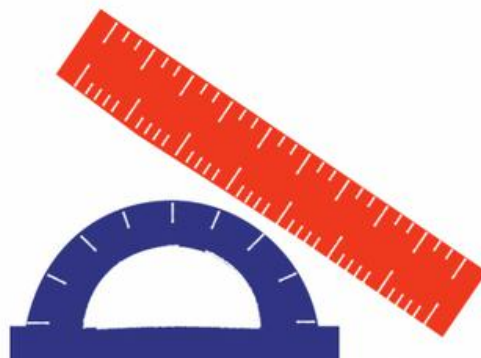
**£0**  
extra cost to anyone



FOWHIS invite  
Reception new  
starters 2025 to  
a Play in the  
Playground

Friday 26 September after school

Bar, music and free games to be enjoyed by all!  
Join your fellow new parents and carers for an  
informal play and put some names to those now  
familiar faces. We hope you can make it!





# PLEASE JOIN FOWHIS AT THE VIRTUAL ANNUAL GENERAL MEETING

October 8th at 8-9pm via Zoom.

Everyone is welcome, the more the merrier.

Link will be sent on the day via your class  
WhatsApp



Find out what we have been fundraising  
for and how we have done it

Find out the plans for the year ahead

Join us to vote in a new committee, all nominations

welcome in advance for Chair, Treasurer and

Secretary via [fowhis@gmail.com](mailto:fowhis@gmail.com)

Find out how YOU can help





# Are you concerned about a child's mental health?



- Anxiety
- Low mood
- Difficulties regulating emotions
- Self esteem and confidence
- Sleep difficulties
- Fears and phobias
- Separation, loss and bereavement



*Scan the QR code below to refer your concern to Hove Learning Federation's Child Mental Health Lead, Bridget Rennie. Link also available on our school website.*



Bridget Rennie (Mental Health Lead) will contact you via email within 2 weeks of your referral.

NB: If you have an urgent concern about a child's mental health please call 03003040061 during office hours or 03005000101 outside of office hours.

Let your child's autumn adventure  
begin here.....



Book here!

Join this half term for  
themed arts & crafts, games,  
food tasting, fun  
experiments, outdoor play  
& so much more!

# HOVE HOLIDAY HUB

West Hove Infant School  
School Road site



School Holiday  
Childcare for  
4-11 year olds  
Monday 27th - Friday  
31st October 2025

Email: [clubs@hovejun.brighton-hove.sch.uk](mailto:clubs@hovejun.brighton-hove.sch.uk) for more info!

<sup>14</sup> Level 1 & Level 2

# CYCLE



# TRAINING

## at Preston Park and Hove Park



**Level 1** is where you will learn to control your bike.

**Level 2** is where you start with real traffic, but sticking to quiet roads.

**Monday 27 – Thursday 30 October  
10am – 12.30pm each day**

## Ages 9 –15

**Levels 1 & 2 together is £47 per person. Concessions available. Places are limited and on a first-come first-served basis.**

**Level 1** – Riders must be able to ride independently with confidence and without stabilisers.

**Progression to Level 2 training** is depended on meeting all level 1 modules to National Standards Level.

To book your place visit:

<https://cycling.envelope.host/courses/>

or contact Emily Tester on 01273 293847

or email: [east.central@brighton-hove.gov.uk](mailto:east.central@brighton-hove.gov.uk)



**Brighton & Hove  
City Council**

**Level 3**

# CYCLE



# TRAINING

**at Preston Park  
and Hove Park**



**Monday 27 – Wednesday 29 October  
1.15pm – 3.15pm each day**

**Ages 11 – 15**

All children must have attended a Level 2 course and allow 3 months practice between levels.

All trainees will be assessed on Level 2 outcomes before progressing further.

**Level 3** is where you learn to cycle safely on busy roads within the city.

Training includes roundabouts, traffic lights and filtering. You must have completed Levels 1 and 2.

Places are limited and on a first-come first-served basis.

Level 3 training costs £52 per person. Concessions available  
To book your place visit:


<https://cycling.envelope.host/courses/>

or contact Emily Tester on 01273 293847  
or email: [east.central@brighton-hove.gov.uk](mailto:east.central@brighton-hove.gov.uk)




**Brighton & Hove  
City Council**

# FRED THE SHED



Fred the Shed is a school community non profit sharing shed that can help with non perishing items to those who are finding it especially hard in the current climate.




Our aim is to help as many families in our school community as possible and it is run by volunteering parents and carers, the sharing shed completely relies on donations of non perishable items which can be dropped into either school reception areas.



**OPEN** every Friday  
after school


along with Fred's free bakery  
which comes from generous  
volunteers from Olio

Fred the Shed is located in the juniors  
front playground just next to the main gates




If you don't feel comfortable with approaching the sharing shed, please email our  
anonymous email address [fredshedschoolroad@gmail.com](mailto:fredshedschoolroad@gmail.com)

and items can be requested and left in the school reception area.



If you'd like to support Fred the Shed with your time, contact [fowhis@gmail.com](mailto:fowhis@gmail.com)  
To keep Fred stocked, there are collection bins in both school receptions.



# Brand Vaughan are proud to be partnered with West Hove Infant School and Hove Junior School.



brand  
vaughan

Sell or let your property with Brand Vaughan and receive **20% off** our standard selling or lettings fee.

Each time you sell or let your property through Brand Vaughan, West Hove Junior School will receive **10%** of the referred selling or letting fee.

Our partnership with West Hove Junior school, not only benefits you, but also benefits your children's school.

**Speak to our team today, we offer free, no obligation valuations.**

Use code **WESTHOVEBV20** to claim your **20% discount.**



**Sales**

**Jimmy Atkins**  
01273 22 11 02



**Lettings**

**Jenna Miles**  
01273 22 11 01