



**WEST HOVE  
INFANT SCHOOL**  
.....  
**A family of friends**

# Hove Learning Federation School/Portland Road Newsletter

Friday 22nd May 2026

**Dear Families,**

We would like to say a huge well done to all of our Year 6 children for the way they approached their Key Stage 2 SATs last week. We are so incredibly proud of how hard they worked, the positive attitude they showed and the resilience they demonstrated throughout the week. Thank you also to the rest of our school community, staff and parents, who supported the children dealing with any worries and building their confidence ahead of the tests.

After a busy half-term, we wish everyone a wonderful break and look forward to seeing you back in school on Monday 1<sup>st</sup> June.

## Diary Dates

- 1<sup>st</sup> Jun** - First day of term
- 10<sup>th</sup> Jun** - Yr 6 Group photos and class photos
- 15<sup>th</sup> Jun** - New parents meeting 6:00pm (surnames A-M)
- 15<sup>th</sup> Jun** - Yr 1 Lewes Railway Wildlife trip (1C & 1G)
- 17<sup>th</sup> Jun** - New parents meeting 6:00pm (surnames N-Z)
- 20<sup>th</sup> Jun** - Summer fete
- 22<sup>nd</sup> Jun** - Yr 1 Lewes Railway Wildlife trip (1D & 1B)
- 22<sup>nd</sup> Jun** - Sports week
- 22<sup>nd</sup> Jun** - Choir performing at Brighton dome.

## Reminder:

As a way of reducing the number of e-mails which were sent out, our school bulletin is now sent out to all parents/carers every Thursday afternoon. It's a great way to keep up to date with what's happening in school, both during the current week and in the weeks ahead. You'll find reminders about events, information on clubs, school trips, and lots more.



## **Attendance at Hove Learning Federation**

### **Attendance and Punctuality:**

Good punctuality is an important life skill and arriving at school on time each day makes a real difference to children's learning.

Research consistently shows that good punctuality supports both academic success and overall wellbeing and that arriving at school on time each day makes a real difference to children's learning.

Our school gates are open from 8:40-8:50 at PR and HR (8.45-8.55 at SR) but bringing children for 8:40 (8:45 at SR) gives the best start to the day.

Those first ten minutes are designed to help pupils settle calmly, greet their friends, organise their belongings, and take part in important morning routines such as registration and early-start tasks.

When children arrive late, even by 5-10 minutes, they can miss the calm, structured start, and key explanations that help them feel settled and confident.

Over a year, arriving just 10 minutes late each day can add up to more than 30 hours of lost learning time. By arriving promptly at 8:40 (8:45 SR), children begin the day feeling ready, organised, and fully prepared to make the most of every learning and social opportunity.

In summary: good timekeeping isn't just about being "on time" – it helps children grow into confident, capable learners and sets them up for success in school and beyond.

By working together to support punctuality, we give every child the best possible start to their day.

Thank you for your co-operation and support.

### **Lateness**

Arriving late to school is very unsettling for children, and frustrating for teachers who have to repeat instructions and help children to catch up. In terms of time in school lost it can have a considerable impact over the whole school year:

5 minutes late every day = 3 days of school lost a year

10 minutes late every day = 6.5 days of school lost a year

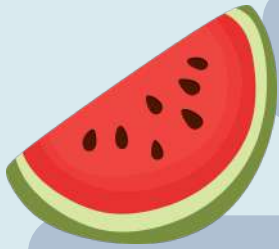
15 minutes late every day = 10 days of school lost a year

20 minutes late every day = 13 days of school lost a year

### **Uniform**

Please see information on our uniform policy on our websites:

<https://www.westhoveinfants.co.uk/parents/school-uniform/> and <https://www.hovejuniorschool.co.uk/uniform>



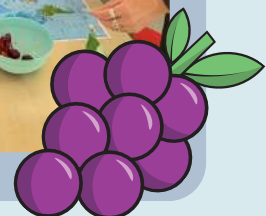
# reception workshop



Our reception Oracy workshop focused on understanding the world and gave parents the opportunity to learn how everyday conversations can support children's language development and learning.

During the workshop, the children explored a variety of different fruits and discovered where they come from by locating countries on a world map. This encouraged the use of new vocabulary linked to countries, continents, colours, textures and taste. The children then enjoyed making their own mini pizzas, developing language through discussion, following instructions, and describing ingredients and actions.

The aim of the workshop was to support parents in using rich vocabulary and meaningful conversations at home to help reception children engage, communicate confidently, and deepen their understanding of the world around them.



# Staff Spotlight



Miss Rose Hegarty  
(Panthers class)



Ms Rebecca Berger  
(Chameleons class)

**Respect**

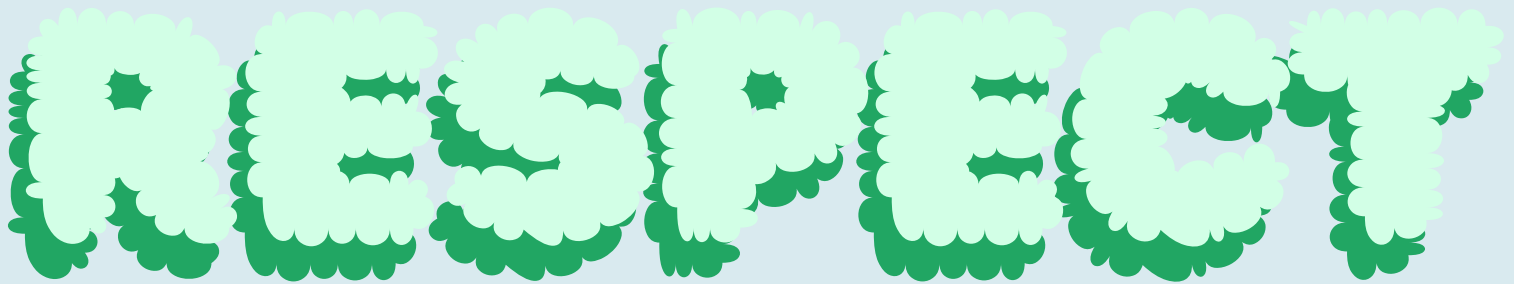
Holland road year 2  
team

This newsletter's value is **respect!** **Respect** means treating others kindly, listening carefully, and valuing everyone's feelings, ideas, and differences. In school, **respect** is very important because it helps everyone feel safe, happy, and ready to learn.

Here are some engaging reflection points that can encourage and inspire our children to be **Respectful**:

Teachers show respect to students by being fair, patient, and encouraging, and by listening to their thoughts and helping them do their best. Students show respect to teachers by listening carefully, following instructions and being polite.

Mutual respect means treating each other with dignity and recognising their value. It's a feeling of deep admiration for other people and their unique qualities. Mutual respect builds trust, teamwork, and a positive classroom where everyone can learn and succeed together.



### **Ways we can all show respect in our school-**

- We listen carefully when others are speaking
- We use kind, polite, and encouraging words
- We help and support each other when needed
- We take turns and share fairly
- We follow our school rules and instructions to keep everyone safe and happy
- We look after classroom equipment, books, and resources
- We help keep our school clean, tidy, and welcoming
- We recycle and care for the environment together
- We walk calmly and safely around the school
- We include everyone in games, activities, and learning
- We respect different cultures, beliefs, ideas, and opinions
- We say “please,” “thank you,” and “sorry” when needed
- We care for plants, animals, and outdoor spaces around our school
- We treat everyone in our school with kindness and respect every day

Please continue to keep in contact with us – should you have any questions or concerns, contact us via the following:

West Hove Infant School  
[admin@westhove-inf.brighton-hove.sch.uk](mailto:admin@westhove-inf.brighton-hove.sch.uk)  
01273 733386

Hove Junior School  
[portlandroadenquiries@hovejun.brighton-hove.sch.uk](mailto:portlandroadenquiries@hovejun.brighton-hove.sch.uk)  
01273 916609

Hove Junior School Inclusion Team  
[inclusionteam@hovejun.brighton-hove.sch.uk](mailto:inclusionteam@hovejun.brighton-hove.sch.uk)  
01273 916609

Best wishes,  
Maddie Southern

## Follow HLF on Facebook and Instagram-



Search on Facebook-  
[hovelearningfederation](#)



Search on Instagram-  
[hovelearningfederation](#)



Maddie Southern  
Executive Headteacher



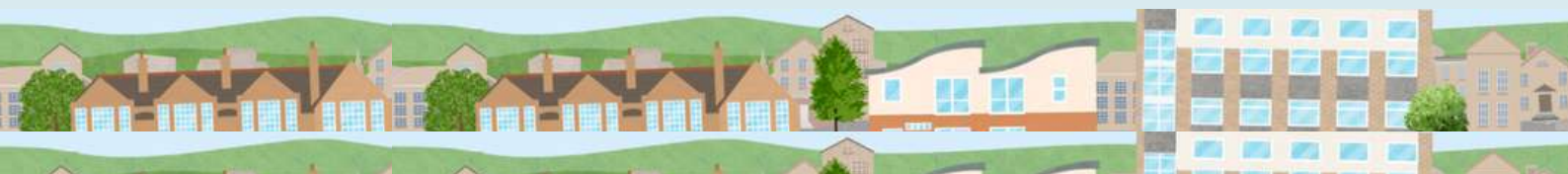
Lorna Cummings  
Co-Executive Headteacher



Niamh O'Shea  
Head of School, School Road



Rachel Jeffers  
Head of School, Portland Road



# WEST HOVE INFANT SCHOOL

.....

## A family of friends



Dear Families,

I am sure many of you will have heard the recent announcement by all ten Brighton and Hove secondary schools that they will be adopting fully smartphone free, brick phone only policies for Year 7's this September 2026. We are delighted to see the schools working collaboratively on this together.

Recently, we have seen a small increase of pupils attempting to bring smart phones into school in Years 5 and 6. Further to our previous correspondence on smartphones, we wanted to clarify for all Parents/Carers that Hove Learning Federation made the decision to ban children bringing smartphones into school in January 2026. This decision was made in line with Brighton and Hove Council and as a response to support families for the well-being of our children and has not changed.

What will happen if my child brings a smartphone to school? Please note that if a child brings a smartphone into school, it will need to be collected upon arrival by a parent or carer. This includes when smartphones travel with children between parents' homes.

Does my child need a smartphone for secondary school in Year 7?

All ten Brighton and Hove secondary schools will be adopting fully smartphone free, brick phone only policies for Year 7's this September 2026.

Thank you in advance for your support.

Kind Regards,

Madeline Southern  
Executive Headteacher

# MAY HALF TERM HOLIDAY CLUBS

## LANCING PREP HOVE

Tue 26 May **CAMPING HACKS: ULTIMATE OUTDOOR SKILLS**

Wed 27 May **BUSHCRAFT VS MINECRAFT**

Thur 28 May **NERF: RISE OF THE MACHINES**

Fri 29 May **NATURE NINJAS: PROTECTORS OF THE PLANET**

## COTTESMORE ST MARY

Tue 26 May **NATURE NINJAS: PROTECTORS OF THE PLANET**

Wed 27 May **CAMPING HACKS: ULTIMATE OUTDOOR SKILLS**

Thur 28 May **BUSHCRAFT VS MINECRAFT**

Fri 29 May **NERF: RISE OF THE MACHINES**

## BRUNSWICK PRIMARY

**INSET DAY** FRI 1 MAY 8.45 - 3.15

**WIZARDS OF THE WILD: A HARRY POTTER ADVENTURE**

Sorry Brunswick, we won't be running clubs at

May half term due to work on the school grounds

**WE'LL BE BACK FOR SUMMER HOLIDAY CLUBS**

## CAMPING HACKS: ULTIMATE OUTDOOR SKILLS

A hands-on day of real camping skills & outdoor fun! Kids will learn how to pitch a tent, carve creations from soap, toast popcorn over the campfire & play different team games. It's a confidence-building day to learn new skills, work together & enjoy the simple joy of being outdoors!

## NATURE NINJAS: PROTECTORS OF THE PLANET

Join us as we learn how to take care of our planet through a day of hands-on nature fun! We'll try eco guerrilla gardening, head out on a bug hunt to explore tiny habitats & make plant print art inspired by the patterns in nature. A day about noticing the wonders in nature & learning simple ways to help our planet thrive

## BUSHCRAFT VS MINECRAFT

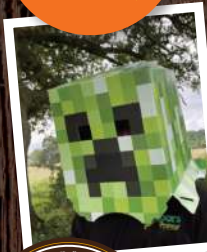
Minecraft comes to life outdoors! Team up to build your village using real bushcraft skills, earn reward pixels for completing survival challenges, & search for hidden resources to craft your tools. Take on Creeper & Lava Chicken games, protect your base, & experience Minecraft like never before! (Knowledge of Minecraft is not required!)

## NERF - ATTACK OF THE MACHINES

NEW for 2026! We'll team up to engineer giant robots design our own mini clay machines & bring them to life before stepping into our high energy Nerf missions. From robot invasion & rescue, to alien attack games, it's a sci-fi day packed with teamwork, creativity & action! (Ages 6+ recommended)



"NO SCREENS JUST GOOD FUN OUTSIDE"



"THE KIND OF DAY EVERY CHILD SHOULD HAVE"



For more info on dates, locations and how the clubs run & to book: [www.theoutdoorsproject.co.uk](http://www.theoutdoorsproject.co.uk)

The Outdoors Project are running May half term holiday clubs in Brighton and Hove (also Worthing, Shoreham, Lewes & beyond) - with Bushcraft vs Minecraft, Nerf: Rise of the Machines, Nature Ninjas: Protectors of the Planet, and Camping Hacks: Ultimate Outdoor Skills. Ages 5-11 | 8:45am-3:15pm | £39.50/day. Tax-Free Childcare & childcare vouchers accepted | Ofsted registered | Book at [www.theoutdoorsproject.co.uk](http://www.theoutdoorsproject.co.uk) | New customers: get £15 off with code FUN44580

# Summer Fete

Save the date!

Saturday  
20<sup>th</sup> June!



*We are excited to confirm that this year's joint school Summer Fete will take place on Saturday 20 June. The Fete will be a fun-filled day for our whole school community with food, drinks, games, music, and performances. More details will follow, but in the meantime, please pencil the date in your calendar as we would love to see you there!*

# Hove Infants & Juniors talent show 2026

After the huge success of last year's show, The Hove Infants & Juniors Got Talent Show is back! Does your child love to sing, dance, tell jokes, perform magic, show off martial arts skills—or anything else entertaining? We'd love them to take part!

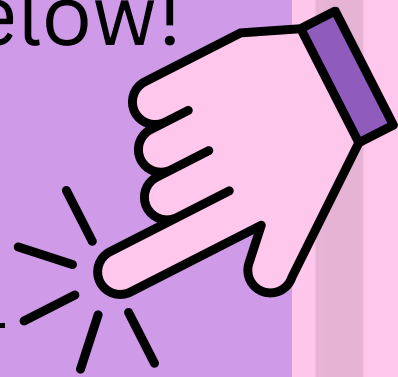
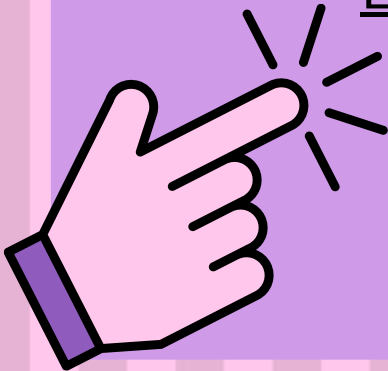
Saturday 20 June | 11am–3pm At the School Summer Fete

Entry Groups (judged separately):

- Group 1: Reception, Years 1 & 2
- Group 2: Years 3 & 4
- Group 3: Years 5 & 6

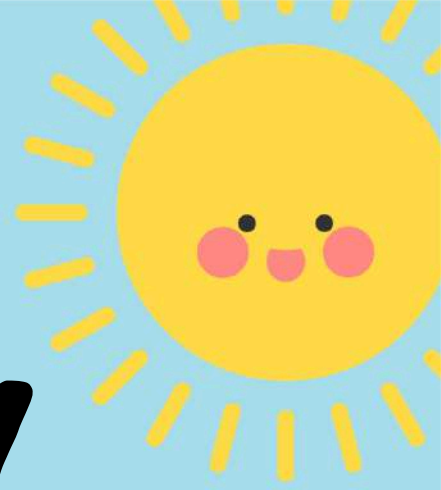
Sign up using the link below!

[Enter the talent show here!](#)





# SUN SAFETY



## ✓ STAY HYDRATED!

Make sure your child brings water to school each day. Adding an ice cube or frozen berries to it makes it extra refreshing!



## ✓ BRING SUNSCREEN!

Use a roll on sunscreen for easy application in the mornings. Your child can bring these to school but must apply them themselves. Add a name in permanent pen to avoid losing it!



## ✓ WEAR A HAT & SUNGLASSES

with a permanent pen!



## ✓ SUMMER UNIFORM

If buying a summer uniform for your child is a challenge, we have pre-loved ones available. Just speak to your class teacher, or a member of staff you feel comfortable talking to. We're here to help!



# GET READING!

AT  
HLF

WEST HOVE  
INFANT SCHOOL  
A family of friends



Summer Term / May 22nd 2026

READING

News!

## OUR TOP BOOKS



### T.G. Jones Book Review competition

This year, to coincide with the National Year of Reading, T.G. Jones are looking for bookworms! Tell them what you love about your favourite book in 25 words or less. You could win some amazing prizes such as book tokens and equipment for the school library. Ask an adult to scan the code and help you enter by 5<sup>th</sup> June.

The Lone Husky by

Hannah Gold

The Lone Husky is a remarkable book about a girl named April who is about to face one of the biggest challenges of her life with a furry companion. When her best friend is injured before a sled race, April signs up to enter the competition in her place. This is a gripping story of the special bond between a girl and a Husky, set in the Arctic landscape.



Uma, 4A



Where do books sleep?



Under the covers!



## NEW releases

Escape! by Sophie McKenzie

A school trip to the aquarium ends up in shark-infested waters!... A dyslexia-friendly read.

The FIFA World Cup Kid's Handbook

Learn about top teams, star players and more!



## The World of READING

31st May

HoveMuseum Teddy Bear's Picnic and stories.

23<sup>rd</sup> May

Preston Park Wellbeing and Activity Walk.

Until 2<sup>nd</sup> June

Would you like to become a Young Booker Prize judge? Enter at [thebookerprizes.com](http://thebookerprizes.com).



# ANCHOR

## A SEASONAL SELF-CARE PROGRAMME FOR MUMS OF CHILDREN WITH ADDITIONAL SUPPORT NEEDS

Led by Kate Reynolds-Smith (MotherNatureChild), each session uses the current season as an anchor and a guide - to help you ground yourself, care for yourself and remember who you are.

Each will give you time to think, supporting you to make decisions, however small, to create positive changes in your life.



### DATES

6<sup>TH</sup> JUNE, 3<sup>RD</sup> OCT, 28<sup>TH</sup> NOV  
2026 & 20<sup>TH</sup> FEB 2027

### TIME

10.30AM-12PM

### LOCATION

PLOT 22, WEALD ALLOTMENTS, HOVE

TICKETS: £30 FOR THE COMPLETE PROGRAMME OR £10 PER SESSION.

BOOK AT: [PLOT22.ORG/PLOT-OFFERINGS/P/ANCHOR](https://plot22.org/plot-offerings/p/anchor)

OR SCAN THE QR CODE BELOW:





# THE HOLIDAY SKATECLUB

AGES 6 - 13YRS

BRIGHTON ALDRIDGE COMMUNITY ACADEMY (BACA)



**EQUIPMENT PROVIDED**  
**ALL ABILITIES WELCOME**  
**MOBILE SKATEPARK**  
**ARTS AND CRAFTS**  
**GAMES AND ACTIVITIES**



  
Ofsted

SkateboardGB

**TAX-FREE  
CHILDCARE  
+ VOUCHERS  
ACCEPTED**

**TUES 26TH – FRI 29TH MAY 9AM-3PM | £45 PER DAY**

**BOOK:**

**[THESKATECLUB.COM/HOLIDAYSKATECLUB](https://theskateclub.com/holidayskateclub)**

Level 1 & Level 2

# CYCLE



# TRAINING

at Preston Park  
and Hove Park



**Level 1** is where you will learn to control your bike.

**Level 2** is where you start with real traffic, but sticking to quiet roads.

Level 1 – Riders must be able to ride independently with confidence and without stabilisers.

Progression to Level 2 training is depended on meeting all level 1 modules to National Standards Level.

To book your place visit:

<https://cycling-envelope.host/courses/>

or contact Emily Tester on 01273 293847  
or email [east.central@brighton-hove.gov.uk](mailto:east.central@brighton-hove.gov.uk)

Tuesday 26 – Friday 29 May

Course 1 -10am – 12.30pm each day

Course 2 – 13.15 – 15.45 each day

## Ages 9 –15

Levels 1 & 2 together is £50 per person.

Places are limited and on a first-come first-served basis.



Brighton & Hove  
City Council



**BACK BY POPULAR DEMAND!!**

**May Half Term Netball Camp**

**Wednesday 27th May '26**

**10am-3pm @ Cardinal Newman**

**BUILDING CONFIDENCE & IMPROVING PERFORMANCE:**

- Engaging & fun drills that enhance an understanding of the rules of netball
  - Lots of game play to put learnt skills and techniques into practice
- Led by Tracy Lewis (Hove Juniors netball coach & PE Teacher)
- Meet and form new friendships with other netball enthusiasts!

- School Years 4-6
- Mixed Gender/Mixed Ability
- £30



**Book now to secure your place!!**

**[www.sportlearning.co.uk](http://www.sportlearning.co.uk) under 'Holiday Camps'**

Additional camp information & policies found  
when booking at [www.sportlearning.co.uk](http://www.sportlearning.co.uk)

Email:  
[tracy@sportlearning.co.uk](mailto:tracy@sportlearning.co.uk)

# CREATE MUSIC

ACADEMY Play on, build confidence,  
and grow together



Create Music Academy is a great place to develop your music skills in a fun and creative environment. Running from Mon 29 June–Fri 17 Jul 2026 in multiple venues across Sussex.



[createmusic.org.uk/create-music-academy](https://createmusic.org.uk/create-music-academy)



Supported using public funding by



ARTS COUNCIL ENGLAND





# Are you concerned about a child's mental health?



- Anxiety
- Low mood
- Difficulties regulating emotions
- Self esteem and confidence
- Sleep difficulties
- Fears and phobias
- Separation, loss and bereavement



*Scan* the QR code below to *refer* your concern to Hove Learning Federation's Child Mental Health Lead, Bridget Rennie. Link also available on our school website.



Bridget Rennie (Mental Health Lead) will contact you via email within 2 weeks of your referral.

NB: If you have an urgent concern about a child's mental health please call 03003040061 during office hours or 03005000101 outside of office hours.

## Does your child struggle to go to school?

Regular drop-in sessions for parents and carers

Hosted by the Family Support team, the sessions are a friendly space to access information and support and meet other parents/carers facing the same challenges.

### Online sessions

24 February 7-8.30pm 19

May 7-8.30pm

### Face to face sessions

Modelo Lounge (145 Church Road, Hove BN3 2AE)

17 March 10 -11.30am

Alcampo Lounge (84 London Road, Brighton BN1 4JF)

21 April 10-11.30am

23 June 10-11.30am

To Find out more or book onto the online sessions, please email:


[schoolsmentalhealthservice@brighton-hove.gov.uk](mailto:schoolsmentalhealthservice@brighton-hove.gov.uk) or Jo Roeg:  
[jo.roeg@brighton-hove.gov.uk](mailto:jo.roeg@brighton-hove.gov.uk)



# FRED THE SHED



Fred's shed is a school community non profit sharing shed that can help with non perishing items to those who are finding it especially hard in the current climate.



Our aim is to help as many families in our school community as possible and it is run by volunteering parents and carers, the sharing shed completely relies on donations of non perishable items which can be dropped into either school reception areas.



**OPEN** every Friday  
after school  
along with Fred's free bakery  
which comes from generous  
volunteers from Olio

Fred's shed is located in the juniors front playground just next to the main gates



If you don't feel comfortable with approaching the sharing shed, please email our anonymous email address [fredshedschoolroad@gmail.com](mailto:fredshedschoolroad@gmail.com)

and items can be requested and left in the school reception area.



If you'd like to support Fred's Shed with your time, contact [fowhis@gmail.com](mailto:fowhis@gmail.com)  
To keep Fred stocked, there are collection bins in both school receptions.



Brand Vaughan  
are proud to be  
partnered with  
West Hove Infant  
School and Hove  
Junior School.

brand  
vaughan

Sell or let your property with Brand Vaughan and receive  
**20% off** our standard selling or lettings fee.

Each time you sell or let your property through Brand  
Vaughan, West Hove Junior School will receive **10%** of  
the referred selling or letting fee.

Our partnership with West Hove Junior school, not only  
benefits you, but also benefits your children's school.

**Speak to our team today, we offer free, no  
obligation valuations.**

Use code **WESTHOVEBV20** to claim your  
**20% discount.**



**Sales**

**Jimmy Atkins**  
01273 22 11 02



**Lettings**

**Jenna Miles**  
01273 22 11 01

# **SAMA HOVE** **ST. ANDREW'S** **PRIMARY SCHOOL**



**KIDS KARATE 4YRS+**  
**MONDAY 5:20PM - 6:20PM**

**FAMILY KICKBOXING 6YRS+**  
**MONDAY 6:30PM - 7:30PM**  
**FIRST CLASS FREE!**

**WWW.SAMAGROUP.CO.UK**

TO BOOK YOUR CHILD'S PLACE PLEASE VISIT OUR SITE & CLICK 'JOIN A CLASS'  
*Please Note; After 2 x trial sessions a SAMA membership/insurance is required*