



**WEST HOVE  
INFANT SCHOOL**  
.....  
**A family of friends**

## Hove Learning Federation School/Portland Road Newsletter

Friday 12<sup>th</sup> June 2026

**Dear Families,**

What a fantastic start to the half-term, especially with continued author visits to support our 'Federation Reading Charter'. To see the work that the English team and staff are all doing to develop the school reading community has been really inspirational. We are also continuing to build on the power of belonging and values work in PSHE and classes have relaunched their 'voice boxes' and been working on gratitude videos and affirmations with class teachers sharing best practice across the federation.

Year 4 pupils have completed their Multiplication Tables Check and we were pleased to welcome visitors to observe phonics in Year 1 with all of the pupils demonstrating resilience, focus and a positive attitude to learning over the week. We are incredibly proud of all that our children have achieved and look forward to another busy and exciting final half term of learning ahead

### **Brighton and Hove Reading Charter**

This year, to coincide with the National Year of Reading, the Brighton & Hove Reading Charter was launched. The Charter aims to promote a culture of literacy and a lifelong love of reading across the city, helping children to become confident, enthusiastic and skilled readers.

The Charter encourages schools, families and the wider community to work together to celebrate reading and ensure that every child has access to high-quality books and positive reading experiences. As a school, we are excited to be working towards our Bronze Reading Charter Award. We will be taking part in a range of reading-focused activities, sharing book recommendations, celebrating reading achievements and encouraging children to explore a wide variety of texts. We look forward to continuing to develop a vibrant reading culture and inspiring a love of books in all our pupils.



## **Afterschool club contact info**

ASC number 07342536023 get in touch for last minute changes for collections. Use the [enquirieshlf.afterschoolclub@westhove-inf.brighton-hove.sch.uk](mailto:enquirieshlf.afterschoolclub@westhove-inf.brighton-hove.sch.uk) email if notifying us in advance and any other enquires.

## **Attendance at Hove Learning Federation**

Attendance and Punctuality:

Good punctuality is an important life skill and arriving at school on time each day makes a real difference to children's learning.

Research consistently shows that good punctuality supports both academic success and overall wellbeing and that arriving at school on time each day makes a real difference to children's learning.

Our school gates are open from 8:40-8:50 at PR and HR (8.45-8.55 at SR) but bringing children for 8:40 (8:45 at SR) gives the best start to the day.

Those first ten minutes are designed to help pupils settle calmly, greet their friends, organise their belongings, and take part in important morning routines such as registration and early-start tasks.

When children arrive late, even by 5-10 minutes, they can miss the calm, structured start, and key explanations that help them feel settled and confident.

Over a year, arriving just 10 minutes late each day can add up to more than 30 hours of lost learning time. By arriving promptly at 8:40 (8:45 SR), children begin the day feeling ready, organised, and fully prepared to make the most of every learning and social opportunity.

In summary: good timekeeping isn't just about being "on time" – it helps children grow into confident, capable learners and sets them up for success in school and beyond.

By working together to support punctuality, we give every child the best possible start to their day.

Thank you for your co-operation and support.

## **Lateness**

Arriving late to school is very unsettling for children, and frustrating for teachers who have to repeat instructions and help children to catch up. In terms of time in school lost it can have a considerable impact over the whole school year:

5 minutes late every day = 3 days of school lost a year

10 minutes late every day = 6.5 days of school lost a year

15 minutes late every day = 10 days of school lost a year

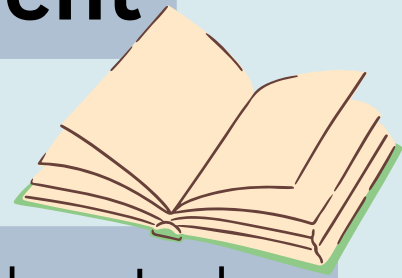
20 minutes late every day = 13 days of school lost a year

## **Uniform**

Please see information on our uniform policy on our websites:

<https://www.westhoveinfants.co.uk/parents/school-uniform/> and <https://www.hovejuniorschool.co.uk/uniform>

# Josh Lacey author event



Year 3 had a fabulous day when author Josh Lacey came to visit them.

Pupils enjoyed hearing about his Time Travel Twins series and took part in a creative writing workshop.

Josh met pupils and signed books for them; each class was also gifted signed copies of his books for their reading corner.

Thank you so much to the PTA who funded this incredible event for Year 3!



# Creative oracy workshop



Our fantastic Oracy Family workshop was all things Creative today. We talked about all the ways children can be creative in school and at home and all of the fantastic talk that can go around this area of learning. There are so many different areas to talk about and enjoy including singing, dancing, art, junk modelling, building with construction kits, drama, role play and making up stories around small world. Parents shared their varied experiences with their own children and then the children talked about what they liked and didn't like about a Miro painting together. Then we got messy and creative with lots of lovely art activities that can be recreated at home. Sadly this is the last workshop this year, so a massive thank you to all the families that have attended. It has been really wonderful to spend such a special time with parents and children together.



# Table tennis festival

During the half-term break, Kasper from 4 Blue and Miss Anglada attended a Table Tennis Festival at the Corn Exchange in the Dome. The event featured lots of tables where participants could enjoy friendly matches against other players. The highlight of the day was the opportunity to take part in an attempt to set a Guinness World Record! Kasper and Miss Anglada proudly joined in to help achieve this incredible feat. It was a fantastic experience and a fun-filled afternoon enjoyed by all.



**Most consecutive opponents in a table tennis rally : Held by Simon Sprenger (Germany) with (132) consecutive opponents. (Note: The record was previously held by both BTTC and the Ormeau Table Tennis Club in Belfast).**



# Staff Spotlight



**Resilience**

Rachel Jeffers  
-Head of Portland road-

This newsletter's value is **resilience!** **Resilience** the capacity to withstand or to recover quickly from difficulties. In school, **resilience** is very important because it ensures that if we do not understand something, we keep trying until we do.

## Building **Resilience**: A Core Value in Our School Community

At the heart of our school ethos is a commitment to nurturing not only academic success, but also the personal qualities that help our students thrive in an ever-changing world. One of the most important of these is resilience.

Resilience is the ability to face challenges, adapt to setbacks, and keep moving forward with determination. In a school environment, this might look like a student persevering through a difficult maths problem, learning from feedback on an essay, or finding the confidence to try again after disappointment. These everyday moments are where real growth happens.

We believe that resilience is not something people are simply born with—it is a skill that can be developed over time. As teachers, we play a key role in modelling this mindset. By encouraging effort over perfection, celebrating progress, and creating a safe space where mistakes are seen as part of learning, we help students build the confidence to take risks and embrace challenges.

# RESILIENCE

Why is resilience so important? Beyond the classroom, life will inevitably present obstacles. Students who develop resilience are better equipped to manage stress, overcome difficulties, and maintain a positive outlook. They learn that success is not about avoiding failure, but about learning how to respond to it.

As a school community, we are proud to support our students in becoming resilient learners—young people who are not afraid to try, to fail, and to try again. These are the qualities that will serve them well, both in school and far beyond.

Together, we continue to foster a culture where resilience is recognised, encouraged, and celebrated every day.

# GET READING!

AT  
HLF

WEST HOVE  
INFANT SCHOOL  
A family of friends



Summer Term – June 12<sup>th</sup> 2026

## READING

## News!



Have you discovered Authorfy yet?

Authorfy is an online platform that brings books to life through author videos, interviews and creative activities linked to popular children's books. We use Authorfy in school to inspire a love of reading and writing.

As part of the National Year of Reading 2026, Authorfy is completely FREE for everyone. Families can access all videos, resources and book extracts at home, making it a fantastic way to discover new books and authors together.

[authorfy.com](http://authorfy.com)



What do planets like to read?



Comets!

## The World of READING

## OUR TOP BOOKS



### KS1



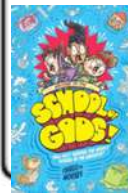
Year 2 have loved listening to this book: 'Milo Imagines the World' by Christian Robinson & Matt de la Pena.

### LKS2

Year 3 have been enjoying reading the Pizazz series by Sophy Henn after watching a virtual author visit!



### UKS2



Year 5 are loving 'The School of Gods!' by Thiago de Moraes – a thrilling adventure through the world of Greek mythology!

## NEW releases



Age 6+

Squid Bits by Jess Bradley  
For lovers of Bunny vs Monkey

Age 7+  
Hari Kumar:  
Ultimate Superstar  
by Rashmi Sirdeshpande



Age 9+  
Six Weeks by  
Matt Goodfellow



Events at... **THE BOOK NOOK**

Sat June 20<sup>th</sup> Draw along with author/illustrator Steven Lenton

Sat June 27<sup>th</sup> Story and drawing event with Chris Riddell

Visit [booknookuk.com/events](http://booknookuk.com/events) for more information



Please continue to keep in contact with us – should you have any questions or concerns, contact us via the following:

West Hove Infant School  
[admin@westhove-inf.brighton-hove.sch.uk](mailto:admin@westhove-inf.brighton-hove.sch.uk)  
01273 733386

Hove Junior School  
[portlandroadenquiries@hovejun.brighton-hove.sch.uk](mailto:portlandroadenquiries@hovejun.brighton-hove.sch.uk)  
01273 916609

Hove Junior School Inclusion Team  
[inclusionteam@hovejun.brighton-hove.sch.uk](mailto:inclusionteam@hovejun.brighton-hove.sch.uk)  
01273 916609

Best wishes,  
Maddie Southern

## Follow HLF on Facebook and Instagram-



Search on Facebook-  
hovelearningfederation



Search on Instagram-  
hovelearningfederation



Maddie Southern  
Executive Headteacher



Lorna Cummings  
Co-Executive Headteacher



Niamh O'Shea  
Head of School, School Road



Rachel Jeffers  
Head of School, Portland Road

### Diary Dates

- 15<sup>th</sup> Jun** - New parents meeting 6:00pm (surnames A-M)
- 15<sup>th</sup> Jun** - Yr 1 Lewes Railway Wildlife trip (1C & 1G)
- 17<sup>th</sup> Jun** - New parents meeting 6:00pm (surnames N-Z)
- 20<sup>th</sup> Jun** - Summer fete
- 22<sup>nd</sup> Jun** - Yr 1 Lewes Railway Wildlife trip (1D & 1B)
- 22<sup>nd</sup> Jun** - Sports day Yr 3&4 (10:00am - 1:00pm Wishpark)
- 22<sup>nd</sup> Jun** - Choir performing at Brighton dome.
- 23<sup>rd</sup> Jun** - Infants sports day 1C, 1G, 2M & 2TR (9:30am - 11:30am Wishpark)
- 24<sup>th</sup> Jun** - Yr 3 Parent/Carer meeting (6:00pm - 7:30pm)
- 25<sup>th</sup> June** - Infants sports day 1B, 1D, 2L & 2T (9:30am - 11:30am Wishpark)
- 3<sup>rd</sup> July** - Transition day across the federation
- 16<sup>th</sup> July** - Yr 6 production (PM)
- 21<sup>st</sup> July** - Silent disco (AM)
- 22<sup>nd</sup> July** - Last day of term (dress down day bring non-perishable food for our community food bank)



# WEST HOVE INFANT SCHOOL

.....

## A family of friends



### **Governing board changes**

As we move into this final term of the academic year, I'm writing to you as the new Chair of Governors for the Hove Learning Federation Governing Board following the forthcoming departure of our outgoing Chair, Lisa, and Vice Chair, Louise, who are both stepping down at the end of this term after many years of dedicated service.

Having joined the governing board around a year ago, it's great to take on the role of Chair and I look forward to working alongside fellow governors, school leaders, staff and our wider school community as we continue to support the success of the federation and ensure the best outcomes for all our pupils. We are still working through the appointment of our replacement Vice Chair and will be able to provide an update on this before the end of term.

On behalf of the entire governing board, I'd like to express our sincere thanks to Lisa and Louise for their outstanding service to the federation over many years. Through their dedication, expertise and unwavering commitment, they have supported countless pupils, families and staff, while playing a pivotal role in the development and success of our schools.

Their leadership has helped guide the federation through many important developments and achievements. Together, they have helped establish a strong and effective governing board, built on clear values, robust governance and a steadfast commitment to ensuring the best possible outcomes for every child.

Their contribution to the federation has been truly significant, and they leave behind strong foundations on which we will continue to build. We are incredibly grateful for everything they have done and for the positive and lasting impact they have had on our school community.

I'm also pleased to welcome three new governors: Maria Puertas, Amir Khodavirdipour and Celia Normington - each bringing valuable skills, experience and perspectives. We are delighted to have them as we continue to strengthen governance across the federation.

Many parents and carers may not always see the work governors undertake behind the scenes. The governing board plays an important strategic role within the federation, working closely with school leaders to help shape the long-term vision and direction of the schools. Governors provide support and constructive challenge, oversee financial performance, monitor educational outcomes, ensure safeguarding arrangements are robust and hold school leaders to account for delivering the best possible education and opportunities for every child.

Alongside our regular board and committee meetings, governors visit the schools, meet with staff leaders, review key areas including safeguarding, curriculum, finance and pupil outcomes, and work to ensure the federation continues to provide a high-quality learning environment where children can flourish.

As Chair, I am keen to help families better understand the work of the governing board and the role we play. From this term onwards, we'll be providing a short governor update each half term, sharing some of the key areas we have been focusing on and how we are supporting the continued success of the federation.

Thank you for your continued support of our schools and wider community. I look forward to working with governors, school leaders, staff, parents and carers as we continue to build on the many strengths of Hove Learning Federation and ensure every child is given the opportunity to thrive.

## Governing board news and updates

As governors, we continue to be incredibly proud of the vibrant, inclusive and supportive culture that exists across our federation. A wonderful example of this was the recent My Hair, My Heritage event, which saw fantastic engagement from pupils, families and staff. The event was a real celebration of identity, diversity and belonging, showcasing many of the values that make our schools such special places to learn and grow.



Last term, we also held our termly Curriculum and Inclusion and Finance and Leadership Committee meetings. During these sessions, governors reviewed a number of key areas of school improvement and performance. In particular, we were pleased to see the continued focus on Mastering Number and to review the findings from the recent mathematics subject review. The review identified high levels of pupil engagement, with pupils in every classroom visited speaking positively about mathematics and demonstrating enthusiasm and confidence when sharing their learning. It was encouraging to see the positive impact of the school's ongoing work to strengthen mathematical understanding and enjoyment across the federation.

Governors also undertook monitoring visits focused on Health and Safety and Safeguarding. During these visits, we reviewed how safeguarding and health and safety are managed across the federation, examined school risk assessments and considered the findings of the latest Health and Safety audit.

These meetings and visits provide important assurance that robust systems and processes remain in place to support the safety and wellbeing of all pupils, staff and visitors.

Looking ahead, governors will be coming together for a strategic away day later this term. The session will provide an opportunity to consider the new Ofsted framework and reflect on what this may mean for our schools, pupils and wider community. We will also review our strategic governance priorities for the forthcoming new academic year, ensuring that our focus remains firmly on supporting high-quality education, inclusion, wellbeing and the continued success of the federation. We are looking forward to working with school leaders to shape our priorities and ambitions for the year ahead.

Many governors are also looking forward to attending the upcoming School Fetes on 20th June at Portland Road/School Road and 4th July at Holland Road. Events such as these play an important role in bringing together pupils, families, staff and the wider community, and we thank everyone who plays a role in ensuring the fete is the huge success it is. We look forward to seeing many parents, carers and local residents there.

**SUPPORT HOVE LEARNING FEDERATION SUMMER 20 RAFFLE**

**RAFFLE OVER 90 PRIZES TO WIN, WORTH OVER £4,000 IN TOTAL!**

**PRIZES INCLUDE:**  
 FAMILY PASSES TO LOCAL ATTRACTIONS  
 FOOD & DRINK VOUCHERS  
 FITNESS CLASSES  
 CHILDREN'S HOLIDAY CLUBS  
 HAMPERS & GADGET BAGS  
 MASSES & WELLBEO VOUCHERS  
 CINEMA TICKETS & MANY MORE!

**£1 PER TICKET**

**EARLYBIRD OFFERS  
 12 FOR £10 OR  
 25 FOR £20**

**BUY ONLINE NOW**

HLF Holland Road PTA

Prizes from: Lagen Watersports, Art & Decorations, Shire, The Tree of Life Centre, Be Well, Brighton Cookery School, Stack of 21, The Exchange, Fit+tonicbase, Sausalito Wine School, Salsbury Bay, AntiquesKits, War War! War! Swiss School, The Garden Boy, Memorabilia, Fatts O'Many, Beach Run, Bournemouth, Brighton Tap & Medal, Muzique, Wagonzooze, Yellowink, The Seah Nook, Winky Whirling School of Dance, Bee in the Woods, Florian Kitchen, The Family Kinky, NYC Skatepark, Wood and Wild, Brighton Roccocoarse, Depot Cinema, The Outdoors Project, Texas Tigers, Full Boy Slim, Brighton Zip Wire, House of Culture Brighton, Sea Harvest, WOWO Garage, Walkabout, Daniels, Theeekies Toys, Tappin & Buns, Pizza Pizzeria, Comedie, Bayed Practice, Brighton Hotel, Coaching, Perfumance Beauty & Wellbeing, Toke Design, Sutherland & Soiler, Leonides, Washbrook, Noyant, Paradise Park, The Art Room, Laine, Middle Farm, on K, Halsey, Andler Brighton, World of Wheels, France House. TO BE DRAWN ONLINE ON SATURDAY 4 July 2020 at 9pm.

HOVE LEARNING FEDERATION  
 HOLLAND ROAD PTA

**SUMMER FAIR**  
 SAT 4th JULY . 11AM TO 3PM  
 HOLLAND ROAD SCHOOL SITE BN3 1JY

PERFORMANCES  
 from school and community  
 (more details on the PTA website)

PRE-LOVED GOODS  
 (including school uniforms)

INFLATABLES, CRAFT  
 CORNER, CLASSES, FACE  
 PAINTING and MORE

LUCKY DIP and TOMBOCAS

FOOD  
 from Brighton's exciting  
 food scene

DRINKS (alcoholic and  
 non-alcoholic)

ICE CREAM and  
 ICE LOLLIES

HOME-MADE CAKES  
 (plus hot drinks)

BOWLS OF BELONGING  
 helped bank by Hove Learning  
 Federation

**BIG RAFFLE!**  
 Thousands of pounds  
 worth of prizes to be won.  
 Don't miss the biggest  
 school raffle of the year!

BUY TICKETS  
 SCAN QR CODE

Thank you so much for  
 your amazing support!

Thank you to our supporters

**SUMMER FETE!**

**11am till 3pm**

**20th JUNE**  
 £1 PER ADULT  
 KIDS FREE

Have Junior School &  
 West Hove Infant School  
 Portland Rd, Hove  
 BN3 5JA

Everyone  
 welcome!

Talent Show  
 Live  
 Performances  
 & More!

A BIG THANK YOU TO  
 OUR SPONSOR

MCG  
 CONTRACTORS

GET READY FOR A  
 GREAT TIME!

### **Holiday cycle training courses**

Cycle training is held at Hove and Preston Park during the...

#### **Level 1 & 2 – Ages 9 to 15**

**Cost £50 per person, concessions available**



Monday 27 - Thursday 30 July also 13.15  
- 15.45

Monday 3 - Thursday 6 August

Monday 10 - Thursday 13 August

Monday 17 - Thursday 20 August

Tuesday 25 - Friday 28 August

10.00 - 12.30 each session

Children must have completed all level 1 activities before progressing to Level 2

#### **Level 3 – Ages 11 to 15**

**Cost £55 per person, concessions available**



Monday 3 - Wednesday 5 August

Monday 10 - Wednesday 12 August

Monday 17 - Wednesday 19 August

Tuesday 25 - Thursday 27 August

13.15 – 15.15 each day

Children must have attended Level 2 activities before progressing to Level 3.

Places are limited and on a first-come first served basis.

To book a place visit <https://cycling.envelope.host/courses>

or contact 01273 293847 or email [east.central@brighton-hove.gov.uk](mailto:east.central@brighton-hove.gov.uk)



# SUMMER Holiday clubs



More fun, More friendships, More smiles  
during the Summer break!

Book  
Today!



# Your Nearest HAF Holiday Club

## BRIGHTON AND HOVE:

- St Luke's Primary School, BN2 9ZF
- Rudyard Kipling Primary School, BN2 6RH
- Stanley Deason Leisure Centre, BN2 5PB

## HAF Bookings:

\*FREE HAF spaces for those eligible for benefits-related free school meals

<https://eequ.org/>



The Summer Holidays are coming. Thankfully, Premier Education holiday clubs are too!

Kids moving. Confidence growing. Dozens of activities. Tonnes of fun. And your childcare worries? Sorted.

And with the HAF programme, your children can attend sessions free of charge. Each session includes healthy food and enriching activities.

**Book now** for a holiday full of excitement!

## Clubs are better with friends!



Treat your friends to 20% off...and get 20% off too!

\*Ts&Cs apply. Refer a Friend discount on new bookings only.



**BOOK NOW!**



★ Trustpilot

# BRIGHTON & HOVE

YOUR NEW COMMUNITY

E-CARGO BIKE SCHEME

IS NOW LIVE!

use code: BIKEWEEK for a free hour

**ONE BIKE.  
ALL YOUR STUFF.  
NONE OF THE FAFF.**

SCHOOL TRIPS, FAMILY RIDES,  
BIG SHOPPING TRIPS, TIP RUNS,  
PICNIC ADVENTURES & MORE



Download the  
app to start  
riding today!



**SIGN UP NOW, NEW USERS GET  
FREE RIDES ON US!**

60 minutes free for residents,  
180 minutes free for businesses!

In partnership with:

**OurBike**

  
Brighton & Hove  
City Council

OURBIKE.CO.UK | @OURBIKEUK

# SUPPORT HOVE LEARNING FEDERATION SUMMER 26 RAFFLE

**RAFFLE**  
OVER 90 PRIZES  
TO WIN, WORTH  
OVER £4,000 IN  
TOTAL!

**PRIZES INCLUDE:**  
FAMILY PASSES TO LOCAL ATTRACTIONS  
FOOD & DRINK VOUCHERS  
FITNESS CLASSES  
CHILDREN'S HOLIDAY CLUBS  
HAMPERS & GOODY BAGS  
MASSAGES & WELLBEING VOUCHERS  
CINEMA TICKETS & MANY MORE!

**£1**  
PER  
TICKET

**EARLYBIRD OFFERS**  
12 FOR £10 OR  
25 FOR £20

**BUY ONLINE NOW**



**HLF Holland Road PTA**

**Prizes from:** Lagoon Watersports, Ant & Decorators, Shine, The Tree of Life Centre, Go Wild, Brighton Cookery School, Jack n' Jill, The Exchange, Picturehouse, Sussex Wine School, Volks Railway, Rox, Activities4Kids, Wet Wet Wet Swim School, The Garden Bar, Ubermummies, Fatto O Mano, Beach Box, Barracudas, Brighton Toy & Model Museum, Wagamamas, Yellowave, The Book Nook, Wendy Whatling School of Dance, Bee In The Woods, Pearson Keehan, The Foundry, Kindly, BYC Skatepark, Wood and Wild, Brighton Racecourse, Depot Cinema, The Outdoors Project, Tennis Tigers, Fat Boy Slim, Brighton Zip Wire, House Of Culture Brighton, Sun Harvest, WOWO campsite, Wakehurst, Drusillas, Timeless Toys, Toppie & Burn, Pizza Pilgrims, Komedia, Royal Pavilion, Brighton Padel Coaching, Perfections Beauty & Wellbeing, tSuki Design, Sutherland & Sadler, Leonidas, Washbrooks, Nymans, Paradise Park, The Art Room, Gunns, Middle Farm, art-K, Asiana, Boulder Brighton, World Of Wheels, Franco Manca- **TO BE DRAWN ONLINE ON SATURDAY 4 July 2026 at 6pm**

Poster by @mytinybeast

# SUMMER FETE!



11am  
till  
3pm

Hove Junior School &  
West Hove Infant School  
Portland Rd, Hove  
BN3 5JA

20<sup>TH</sup> JUNE  
£1 PER ADULT  
KIDS FREE

Everyone  
welcome!  
(NO ANIMALS ALLOWED  
SORRY)

Talent Show  
**LIVE**  
Performances  
+ Music!

A BIG THANK YOU TO  
OUR SPONSOR



GET READY FOR A  
GREAT TIME!

# ANCHOR

## A SEASONAL SELF-CARE PROGRAMME FOR MUMS OF CHILDREN WITH ADDITIONAL SUPPORT NEEDS

Led by Kate Reynolds-Smith (MotherNatureChild), each session uses the current season as an anchor and a guide - to help you ground yourself, care for yourself and remember who you are.

Each will give you time to think, supporting you to make decisions, however small, to create positive changes in your life.



### DATES

6<sup>TH</sup> JUNE, 3<sup>RD</sup> OCT, 28<sup>TH</sup> NOV  
2026 & 20<sup>TH</sup> FEB 2027

### TIME

10.30AM-12PM

### LOCATION

PLOT 22, WEALD ALLOTMENTS, HOVE

TICKETS: £30 FOR THE COMPLETE PROGRAMME OR £10 PER SESSION.

BOOK AT: [PLOT22.ORG/PLOT-OFFERINGS/P/ANCHOR](https://plot22.org/plot-offerings/p/anchor)

OR SCAN THE QR CODE BELOW:



# CREATE MUSIC

ACADEMY Play on, build confidence,  
and grow together



Create Music Academy is a great place to develop your music skills in a fun and creative environment. Running from Mon 29 June–Fri 17 Jul 2026 in multiple venues across Sussex.



[createmusic.org.uk/create-music-academy](https://createmusic.org.uk/create-music-academy)



Supported using public funding by



ARTS COUNCIL ENGLAND





# Are you concerned about a child's mental health?



- Anxiety
- Low mood
- Difficulties regulating emotions
- Self esteem and confidence
- Sleep difficulties
- Fears and phobias
- Separation, loss and bereavement



*Scan* the QR code below to *refer* your concern to Hove Learning Federation's Child Mental Health Lead, Bridget Rennie. Link also available on our school website.



Bridget Rennie (Mental Health Lead) will contact you via email within 2 weeks of your referral.

NB: If you have an urgent concern about a child's mental health please call 03003040061 during office hours or 03005000101 outside of office hours.

## Does your child struggle to go to school?

Regular drop-in sessions for parents and carers

Hosted by the Family Support team, the sessions are a friendly space to access information and support and meet other parents/carers facing the same challenges.

### Online sessions

24 February 7-8.30pm 19

May 7-8.30pm

### Face to face sessions

Modelo Lounge (145 Church Road, Hove BN3 2AE)

17 March 10 -11.30am

Alcampo Lounge (84 London Road, Brighton BN1 4JF)

21 April 10-11.30am

23 June 10-11.30am

To Find out more or book onto the online sessions, please email:


[schoolsmentalhealthservice@brighton-hove.gov.uk](mailto:schoolsmentalhealthservice@brighton-hove.gov.uk) or Jo Roeg:  
[jo.roeg@brighton-hove.gov.uk](mailto:jo.roeg@brighton-hove.gov.uk)



# FRED THE SHED



Fred's shed is a school community non profit sharing shed that can help with non perishing items to those who are finding it especially hard in the current climate.



Our aim is to help as many families in our school community as possible and it is run by volunteering parents and carers, the sharing shed completely relies on donations of non perishable items which can be dropped into either school reception areas.



**OPEN** every Friday  
after school  
along with Fred's free bakery  
which comes from generous  
volunteers from Olio

Fred's shed is located in the juniors front playground just next to the main gates



If you don't feel comfortable with approaching the sharing shed, please email our anonymous email address [fredshedschoolroad@gmail.com](mailto:fredshedschoolroad@gmail.com)

and items can be requested and left in the school reception area.



If you'd like to support Fred's Shed with your time, contact [fowhis@gmail.com](mailto:fowhis@gmail.com)  
To keep Fred stocked, there are collection bins in both school receptions.



Brand Vaughan  
are proud to be  
partnered with  
West Hove Infant  
School and Hove  
Junior School.

brand  
vaughan

Sell or let your property with Brand Vaughan and receive  
**20% off** our standard selling or lettings fee.

Each time you sell or let your property through Brand  
Vaughan, West Hove Junior School will receive **10%** of  
the referred selling or letting fee.

Our partnership with West Hove Junior school, not only  
benefits you, but also benefits your children's school.

**Speak to our team today, we offer free, no  
obligation valuations.**

Use code **WESTHOVEBV20** to claim your  
**20% discount.**



**Sales**  
**Jimmy Atkins**  
01273 22 11 02



**Lettings**  
**Jenna Miles**  
01273 22 11 01

# **SAMA HOVE** **ST. ANDREW'S** **PRIMARY SCHOOL**



**KIDS KARATE 4YRS+**  
**MONDAY 5:20PM - 6:20PM**

**FAMILY KICKBOXING 6YRS+**  
**MONDAY 6:30PM - 7:30PM**  
**FIRST CLASS FREE!**

**WWW.SAMAGROUP.CO.UK**

TO BOOK YOUR CHILD'S PLACE PLEASE VISIT OUR SITE & CLICK 'JOIN A CLASS'  
*Please Note; After 2 x trial sessions a SAMA membership/insurance is required*